

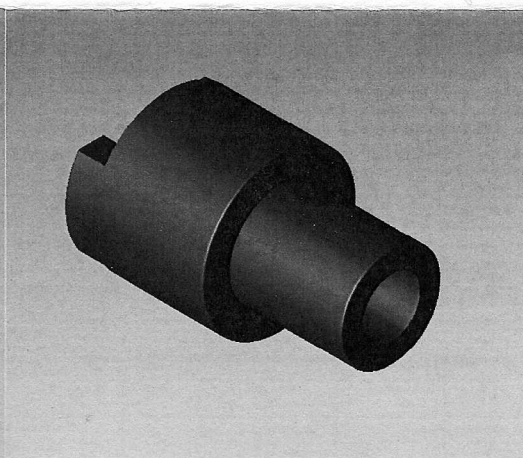
REVERSING THE RETRIEVE:

Helpful tools: Needle nose pliers

- Remove the c-clip and washers that holds the clutch housing onto the spindle. **Do not discard c-clip and washers.**
- Take your pliers and apply pressure at a horizontal angle. Avoid pushing down perpendicularly as it tends to push the tips of the pliers into the washers, damaging them.
- Pull up on the clutch housing to remove from spindle. The rotor sleeve will usually lift up with the clutch housing.
- Separate the rotor sleeve and clutch housing. Now replace rotor sleeve onto spindle.
- Reverse the position of the clutch housing (the top is now the bottom, the bottom is now the top) and replace it onto the rotor sleeve.
- Replace the washer and c-clip.



Clutch Housing



Rotor Sleeve

If there are any questions, contact: sales@solitudereels.com or call 360.424.6600

April 10, 2008